

GN 334 Tubular oval-cross-section handles

Zinc alloy and aluminium



- 1
- 2
- 3
- 4
- 5
- 6
- 7
- 8
- 9
- 10
- 11
- 12
- 13
- 14
- 15
- 16
- 17
- 18

HANDLE SHANKS

Die-cast zinc alloy, epoxy resin coating, RAL 9005 black colour, matte finish. Fitted to the tube by means of a screw.
Threaded blind holes.

END CAPS

Polyamide based (PA) technopolymer, light grey colour.

STANDARD EXECUTIONS

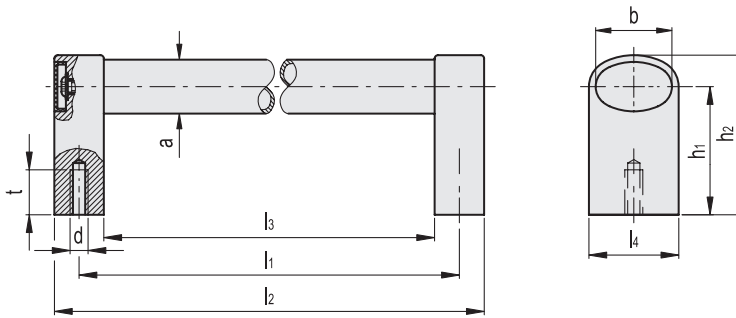
- **GN 334-SW**: aluminium, epoxy resin coating, RAL 9005 black colour, matte finish.
- **GN 334-EL**: anodised aluminium, natural colour.

FEATURES AND APPLICATIONS

GN 334 handles are characterised by a high stability thanks to the assembly of the handle shanks to the tube by means of two screws. These handles are typically used on turning or rolling doors for machines and equipment.

SPECIAL EXECUTIONS ON REQUEST

Different lengths.



Conversion Table	
1 mm = 0.039 inch	
mm	inch
222	8.74
272	10.71
322	12.68
422	16.61
522	20.55
622	24.49
822	32.36



Code	Description	b	l1±0.5	d	a	h1	h2	l2	l3	l4	tmin	⚖
GN.14862	GN 334-36-200-SW	36	200	M8	24	57	71	222	178	40	15	490
GN.14861	GN 334-36-200-EL	36	200	M8	24	57	71	222	178	40	15	490
GN.14867	GN 334-36-250-SW	36	250	M8	24	57	71	272	228	40	15	540
GN.14866	GN 334-36-250-EL	36	250	M8	24	57	71	272	228	40	15	540
GN.14872	GN 334-36-300-SW	36	300	M8	24	57	71	322	278	40	15	563
GN.14871	GN 334-36-300-EL	36	300	M8	24	57	71	322	278	40	15	563
GN.14877	GN 334-36-400-SW	36	400	M8	24	57	71	422	378	40	15	650
GN.14876	GN 334-36-400-EL	36	400	M8	24	57	71	422	378	40	15	650
GN.14882	GN 334-36-500-SW	36	500	M8	24	57	71	522	478	40	15	720
GN.14881	GN 334-36-500-EL	36	500	M8	24	57	71	522	478	40	15	720
GN.14887	GN 334-36-600-SW	36	600	M8	24	57	71	622	578	40	15	791
GN.14886	GN 334-36-600-EL	36	600	M8	24	57	71	622	578	40	15	791
GN.14892	GN 334-36-800-SW	36	800	M8	24	57	71	822	778	40	15	940
GN.14891	GN 334-36-800-EL	36	800	M8	24	57	71	822	778	40	15	940

Lift & Pull handles